

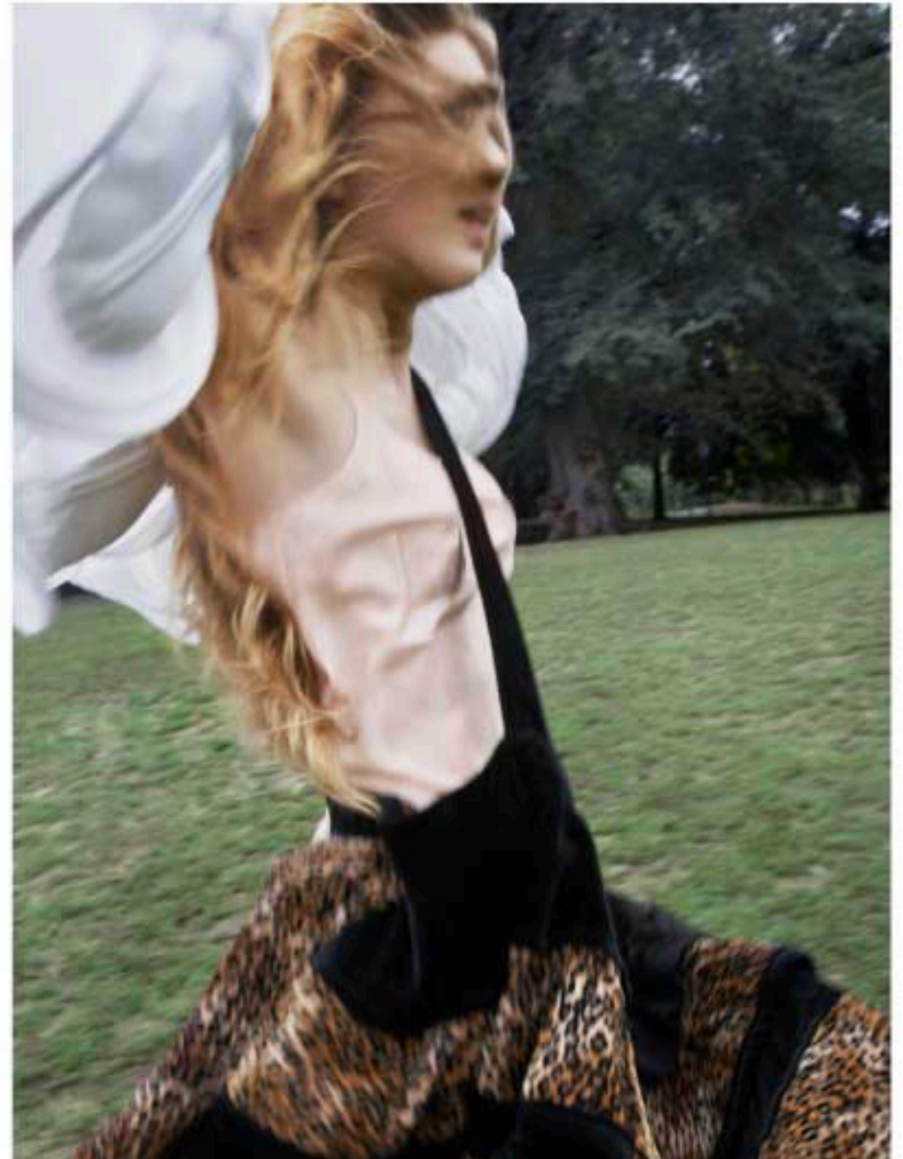
EMOTIONAL ENGAGEMENT





photographer RICK HAYLOR
CARDIGAN SOCIETY FOR RATIONAL DRESS

-photographer RICK HAYLOR
-leopard skirt by TAO COMMES DES GARCONS
white bubble jacket by COMMES DES GARCONS
-baby pink slip by CANDELA



"...Every Celebrity, Musician, or Model you see in this magazine is an offshoot of her essence. The great thing about Suzi is that she is not dated in her style; she is not this sad thing who is in some retro time warp. I would say neo-classic, she evolves..." - John Slattery, Wanted







Pull en Lurex.
ISABEL MARANT.
Sauter-yeuse en
Lycra. VICTORIA'S
SECRET.

Blouse en coton
mêlé de soie.
tulle en cuir verni.
LOUIS VUITTON.
Short en coton.





NEW YORK

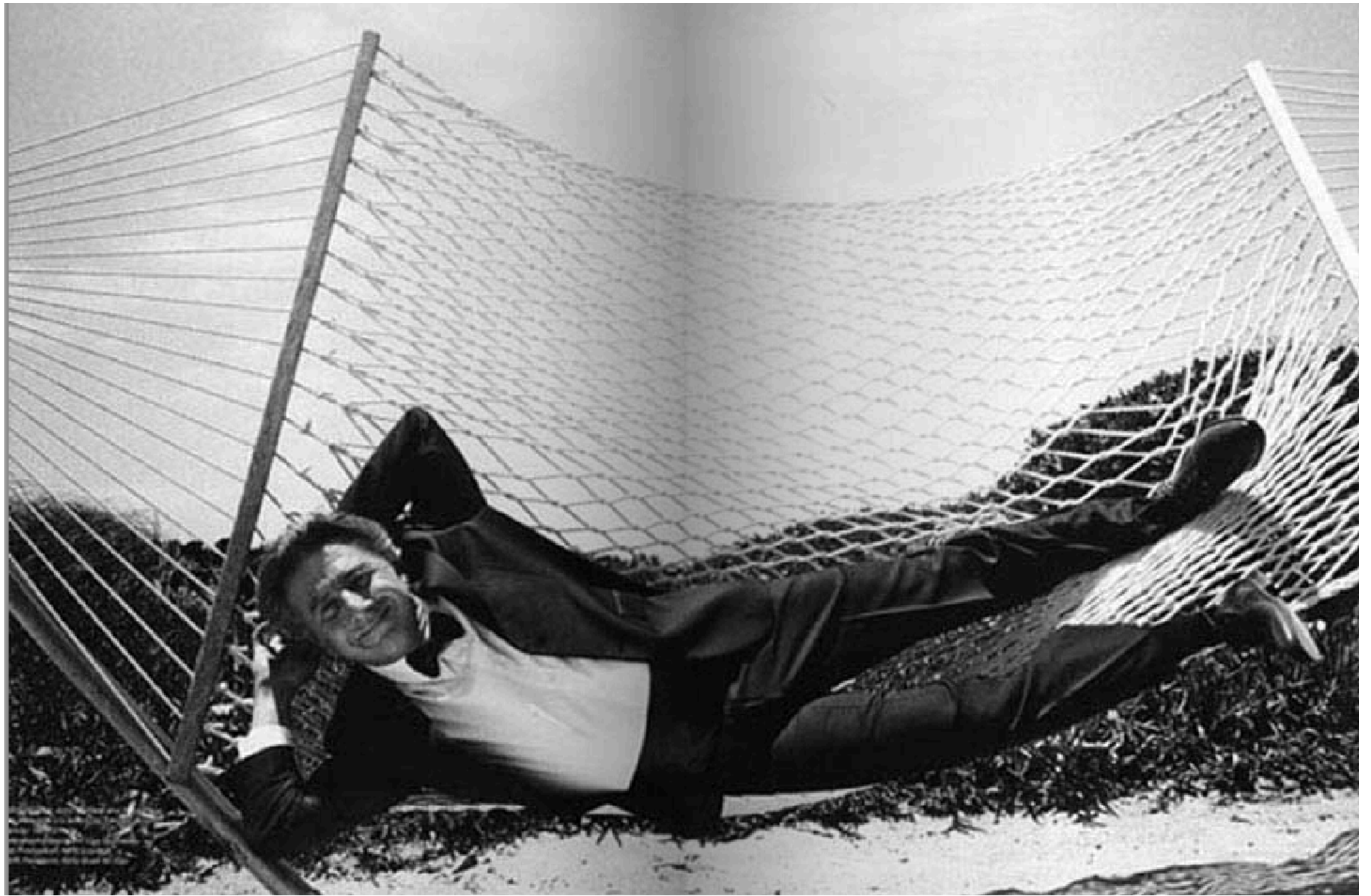
FANTAISE COSMOPOLITE POUR PRINCESSE URBAINE CHIC

Réalisation John Slattery - Photos Patric Schmitt

Maître de cérémonie
Folpe Oliveira Baptista.
Dernière en scène
et robe: Hugu Boss. Sac
en pyjama: Coach.
Sandales en cuir: Stuart.



Blazer in cotone da sera
 Blu scuro, bottoni in
 metallo, da uomo. E per
 la donna, in cotone
 con bottoni in metallo
 e tasca interna. Blazer
 blu scuro da uomo. Bot-
 toni in metallo. Bot-
 toni in metallo. Bot-
 toni in metallo. Bot-
 toni in metallo.
 Yves Saint Laurent









-bodysuit by
-skirt by TH
-tights by







h
g
a
e

ARTISTIC ENGAGEMENT

Fashion and Art: The Affair Continues

On one of my frequent visits to my favorite place in New York, The Metropolitan Museum of Art , once again I was mesmerized by the works of so many people. One painting in particular stood out to me, it was a portrait of the Painter Alex Katz by the renowned Artist Phillip Pearlstein.

The first thing which grabbed my attention was the juxtaposition of elegance and angst of the subject and the over all feeling of tranquility due to its calming color palette. I was fascinated by the depiction of the everyday man, the lines of wear and tear in the face, the suggestion of someone who has traversed life's often weary road and his knowing and very serious demeanor. This painting was created in 1965 but I feel the work provides a timeless introspective quality that everyone can relate to in the modern era.

Immediately I contacted Jason and said I wanted to do a Men's portrait series inspired by this work. I wanted it to be a broad spectrum of personalities and styles all fused together by a common thread. Our focus was to exhibit the subject in the same pose and discover what each personality brought to the narrative. The following images and film are a result of this concept.

John Slattery



artist Philip Pearlstein
Alex Katz 1965 oil on canvas

**Jay
Paavonpera**
28, Boston, MA
Artist, dirquo nyc / ++

Style Influence:
“Jean-Michel Basquiat,
sartorially eclectic,
and effortlessly stylish..”



**Cedric
Moreau**

38, Paris, France
Eyewear Consultant

Style Influence:
"Jason Wood."



Michael Sanders

aka "The Colonel"

44, London, England
Fashion Photographer

Style Influence:
"David Bowie-Thin White
Duke. John Lennon getting
married. Mick Jagger get-
ting married. The Police.
David Sylvian & Japan. Ray
Petri and Buffalo Style.
James Dean."



BROKEN APART

Drawing inspiration from artist's Alma Woodsey Thomas and Jean Michele Basquiat, the 1980's lower east side bohemian is transplanted in the outer boroughs of the modern day millennial. Integrating post punk street style with this generation's non conformist outlier.

Photographer: Kevin Sturman

Creative Director/Fashion Editor: John Slattery

Styling Assistant: Erica Pitnick

Casting Director: Julius Poole

Model: Nikita M'Bouroukounda with Ford

Beauty Director: Regina Harris

Hair Stylist: David Cruz for Kevin Murphy

Contributing Artists: Lisa Hamilton and Erica Svec





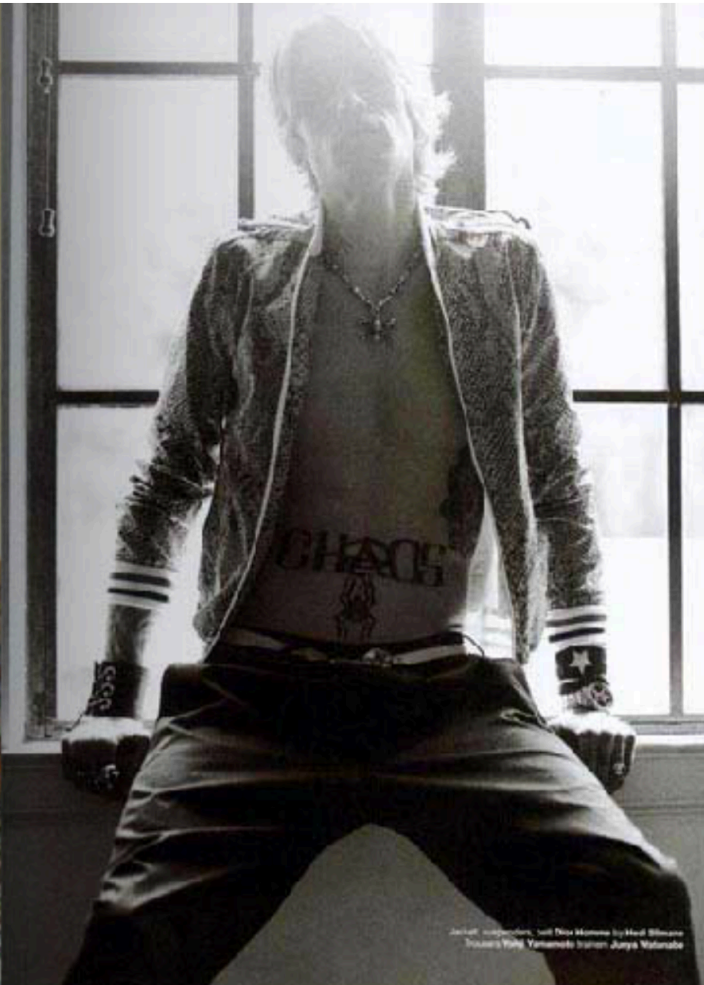
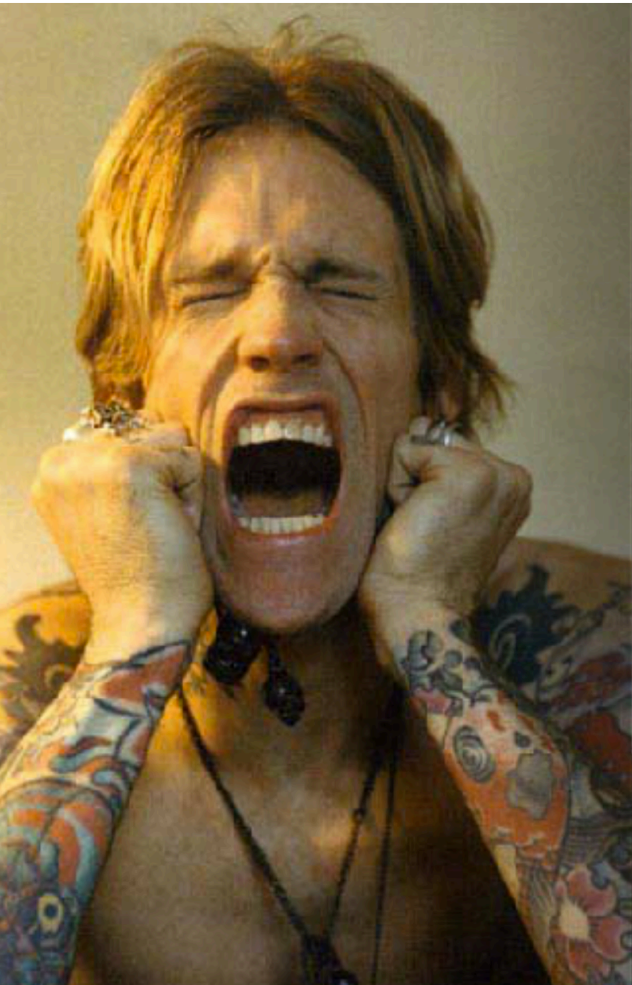










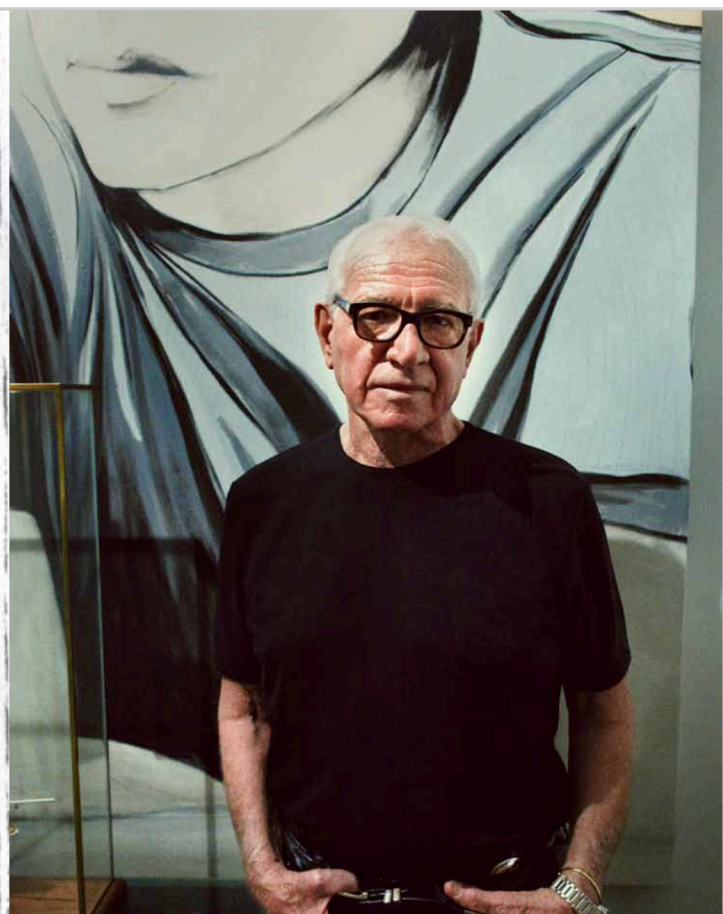


Jarvis: photographer, Jeff Rice; Makeup by Heidi Blumauer
T-shirt: Yogi Yamamoto; Socks: Junya Watanabe

THE RON FERRI

CELEBRATED AMERICAN ARTIST
Ron Ferri has been a presence in the art world for over four decades and continues to lead an exceptional life. Raised in rural Rhode Island, he served in the U.S. Air Force and studied abroad in Europe during his youth. Upon returning to the states he focused on his work and soon evolved into an innovative modern artist. His works are in the Museum of Modern Art, the Smithsonian Museum, the Whitney Museum and the Musée d'Art Moderne in St. Etienne, France, to name a few.

P
R
O
J
E
C
T



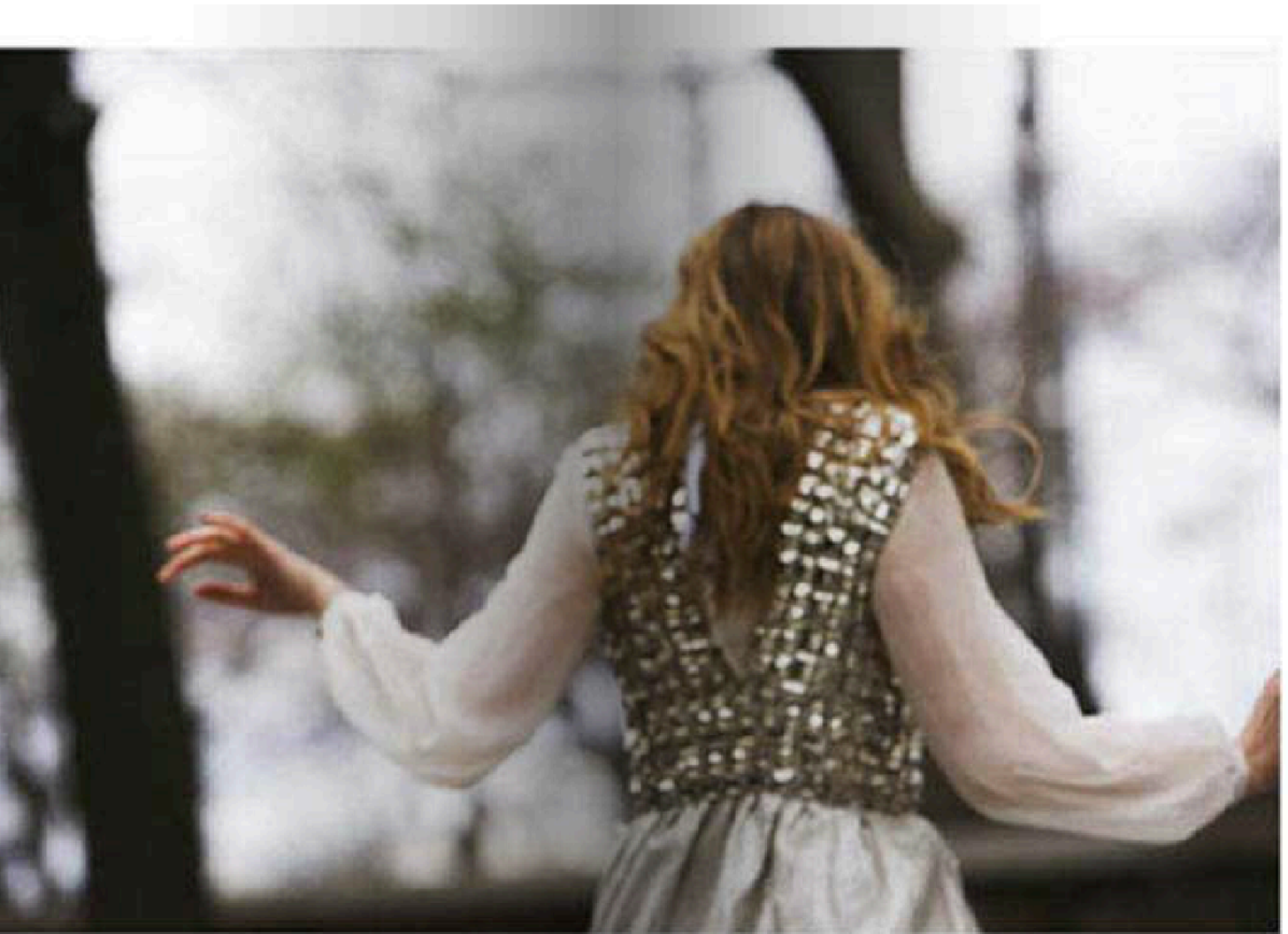




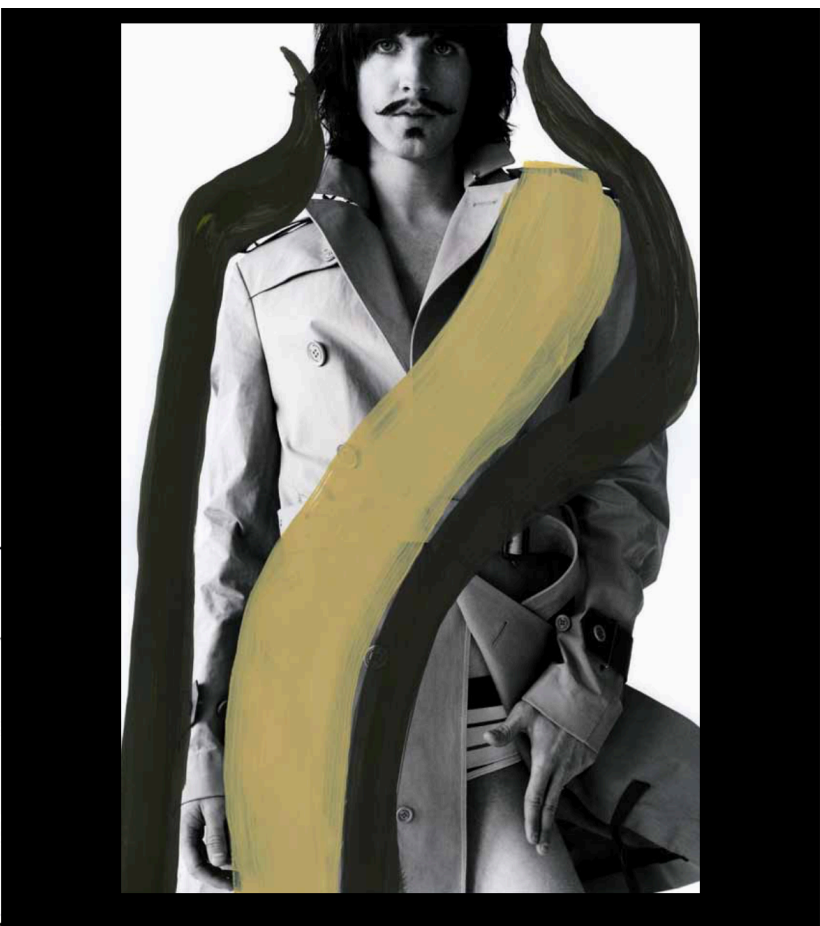
OS PUNK ROCK
AN FRANCISCO.
EVERYONE KNEW
UZI SKATES,
HE WAS THE
ORIGINAL
OLLER GIRL.
EAL LIVE GEISHA
LA ANIME.

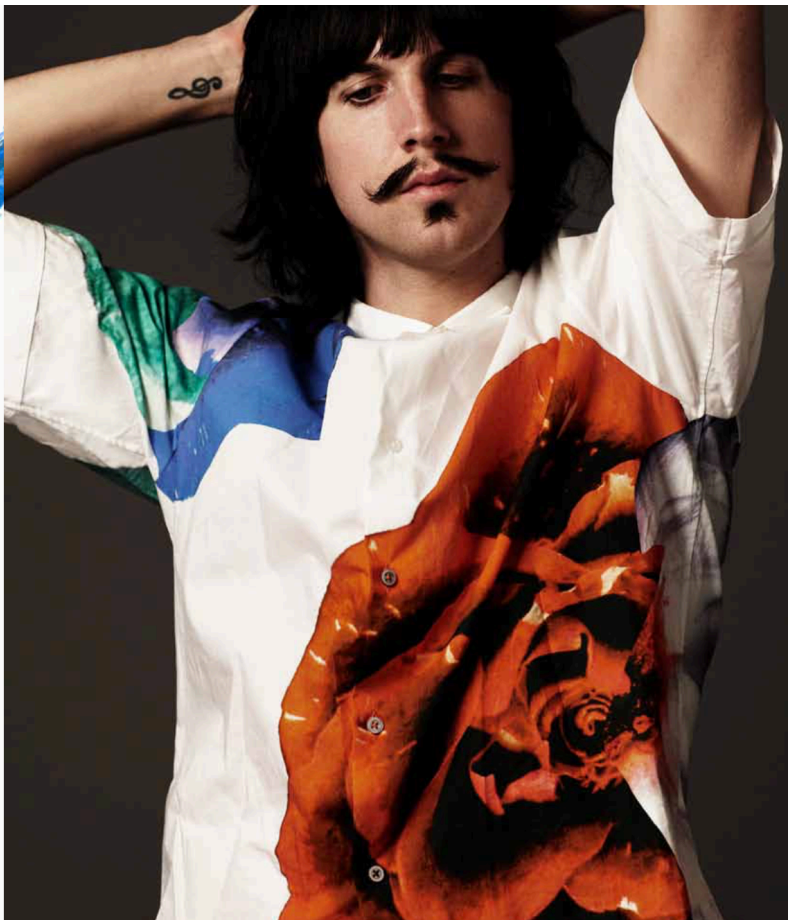
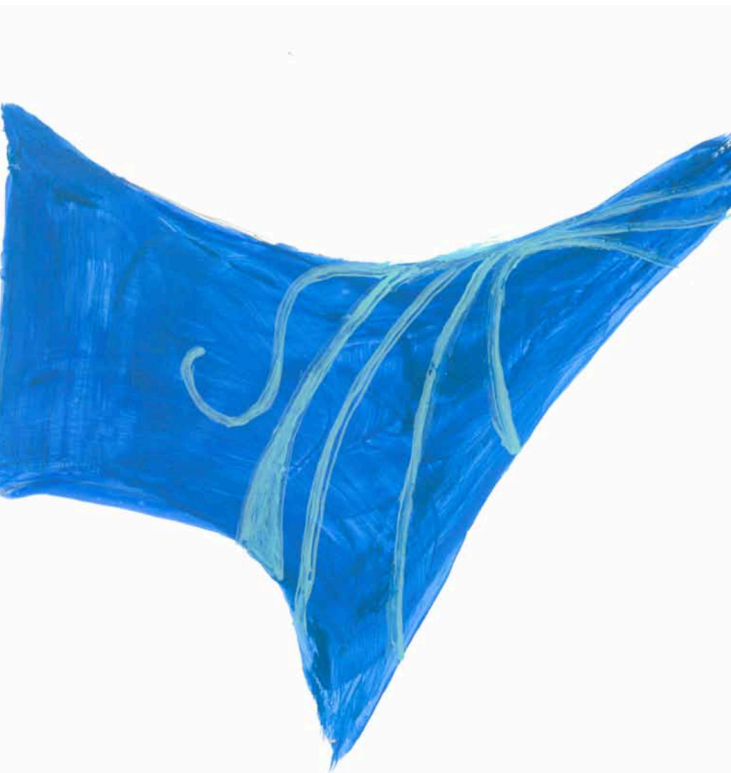
SCOTT COVERT | ARTIST





PERRO
NALLY





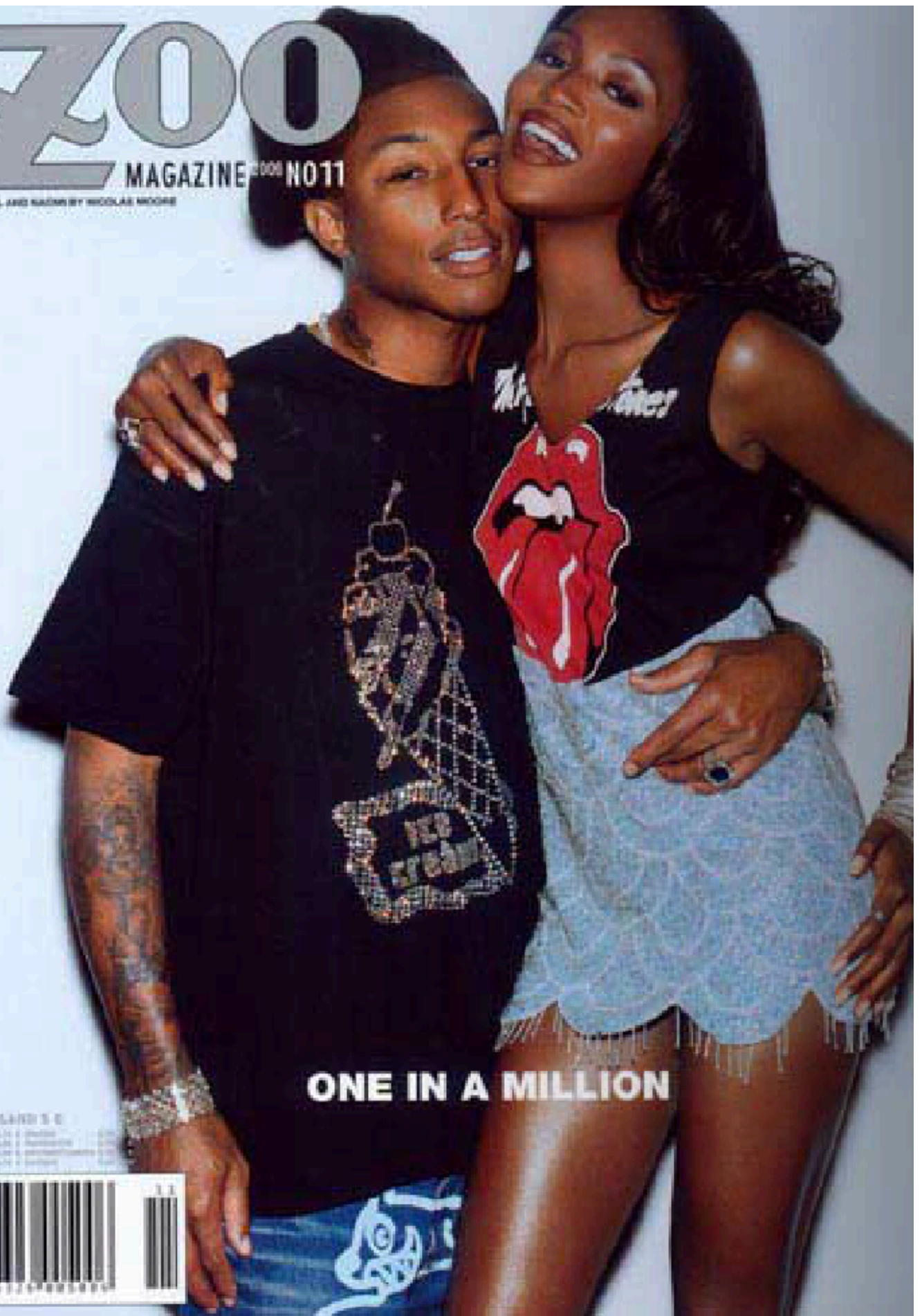




ZOO

MAGAZINE 2000 NO11

MARRELL AND NAOMI BY NICOLAS MOORE



ONE IN A MILLION

ENTERTAINMENT WEEKLY

ISSUE NO. 11
NOVEMBER 2000
\$4.99
WWW.ZOO.MAGAZINE.COM

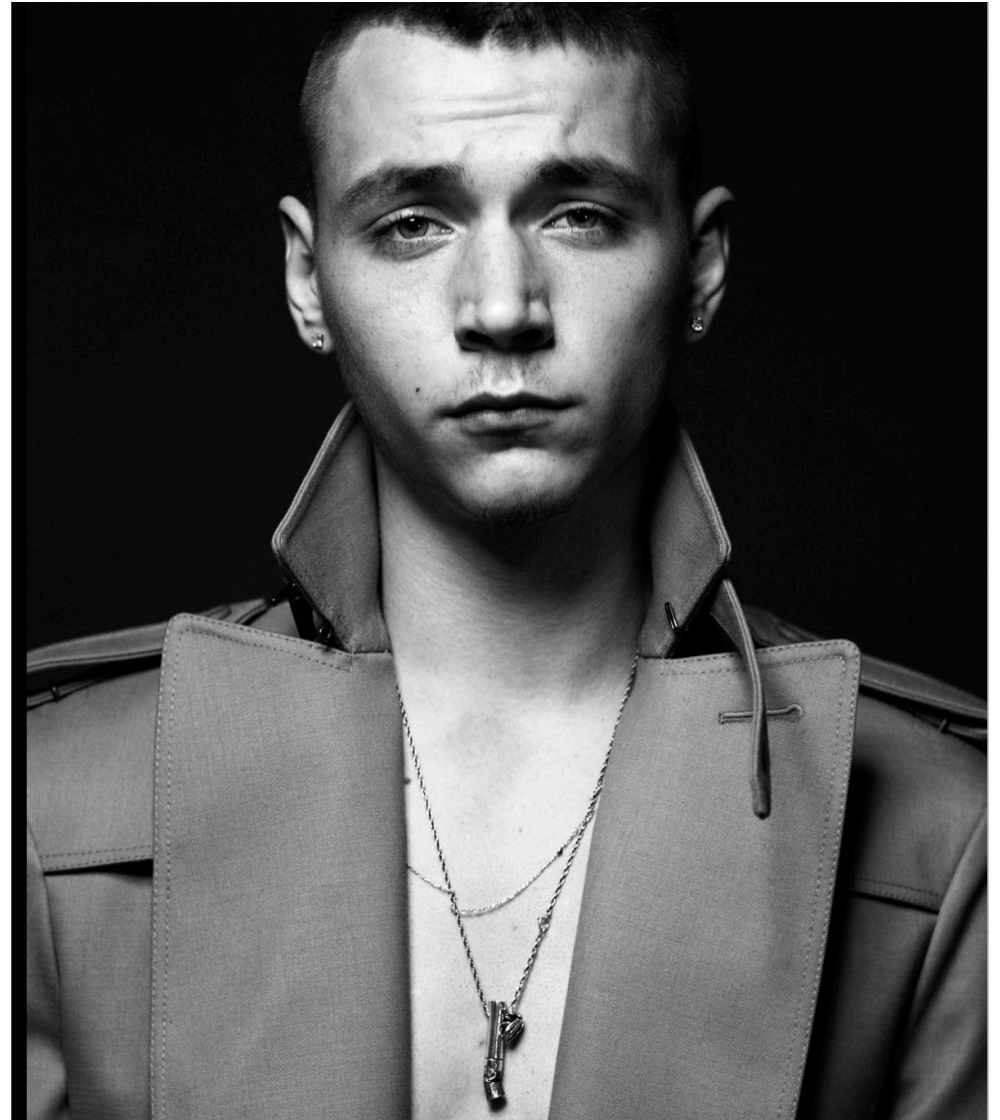




“ LONG
IS THE WAY
AND HARD,
THAT OUT OF HELL
LEADS
UP TO
LIGHT ”

photographer Tetsuharu Kubota

-JOHN MILTON



LUXURIOUS ENGAGEMENT



ART + COMMERCE

PHOTOGRAPHER:
JEFF BARK

FASHION EDITOR:
JOHN SLATTERY

Dress by Lanotti, belt and black
beach triangular Cuffs from Alexis Bittar.



Ruffle Dress from Viktor & Rolf,
Sweater from Missoni, Belt from
Willow Earrings by Bulgari, Ring
from Chopard, Cuffs by Tom Binns
Shoes Paule by Rubie Paule





Charles. Philip

IS AN UP AND COMING

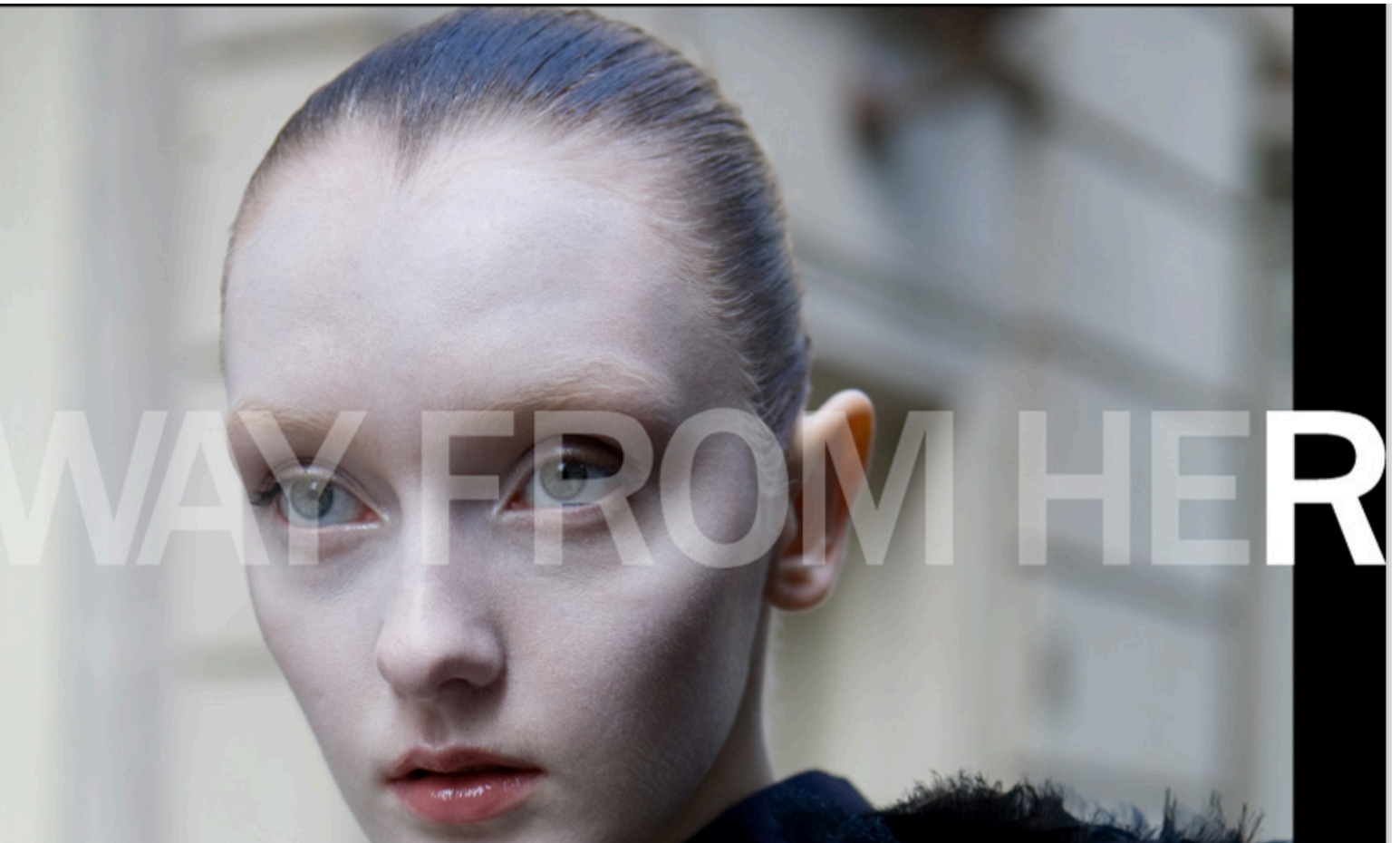
shoe designer based out of Shanghai.

Originally inspired by a beloved striped shirt,

Charles has designed a line of stylish slip-ons that come in a wide array of patterns and colors.

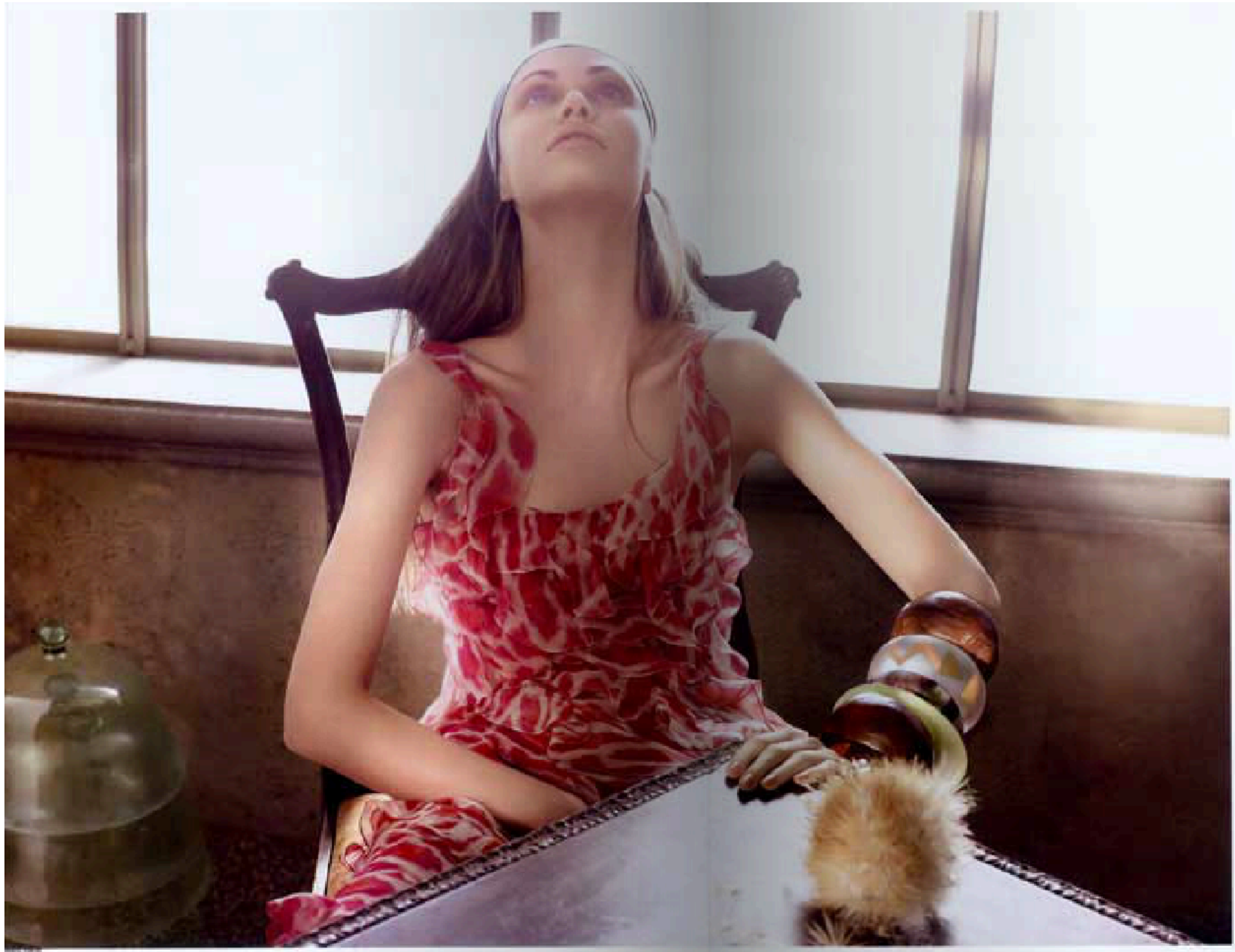
With a portion of the proceeds going to local charities, his Spring/Summer 2011 line will be available worldwide at stores like Collette in Paris, Louisa via Roma in Florence, United Arrows in Japan, Browns in London, and Bloomingdale's in New York.





WAY FROM HER





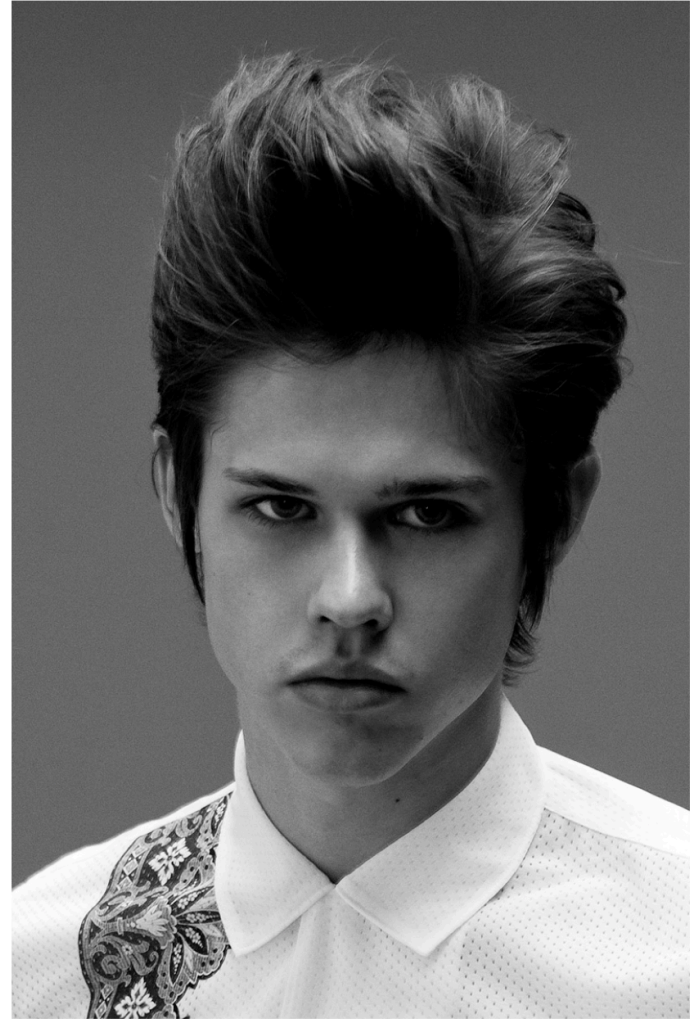
FOR MORE INFORMATION
CONTACT THE
MANAGER OF THE
LONDON STORE
020 7552 1234

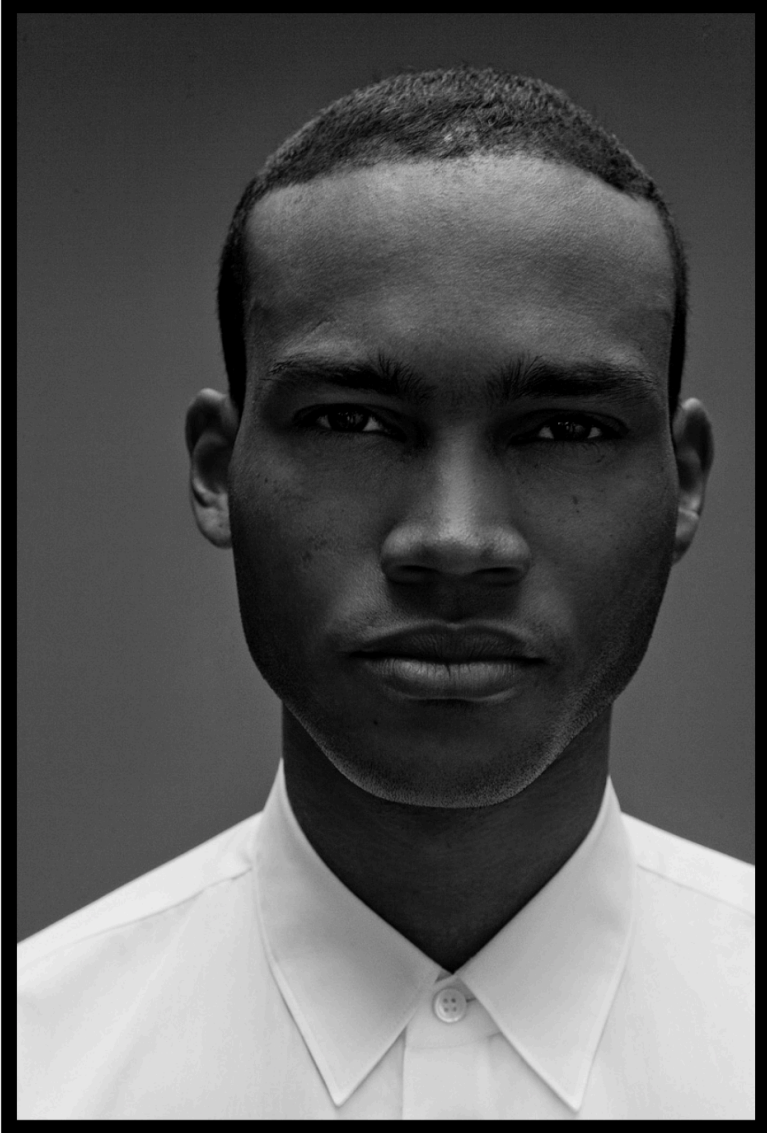
PHOTOGRAPH BY











BRAND ENGAGEMENT



MARGO MANHATTAN

INTERVIEW BY KIMIE O'NEILL

MARGO is the designer and founder of MARGO Manhattan. MARGO began her career studying design in Paris where she had the great privilege to collaborate with fashion icons Karl Lagerfeld and Christian Lacroix before launching her eponymous boutique in Manhattan's SoHo in 1992. With a passion for architecture and sculpture, Margo soon garnered a cult following with her sensual pieces, handcrafted with the finest stones in Sterling and 18 Karat Gold.

Best known in philanthropic circles as the designer of the "original" red ribbon AIDS awareness pin, Margo has applied her talents to many charities and causes. She developed Estee Lauder's Breast Cancer Foundation's pink ribbon, adapted the Noguchi Lyre pin for a George Balanchine Celebration, and with Mrs. Avery Fisher created the Ovarian Cancer Research Fund's Pin.

Most recently, MARGO has created a stylish gallery to showcase her works with a new tony boutique on Madison Avenue, featuring collections for women and men in Sterling Silver and 18 Karat Gold.

Tell me a little about your background. When did you know you wanted to design jewelry?

I grew up in NYC and my mother was a prima ballerina for the New York City Ballet so that influenced my style and affinity for movement in every piece I design; it also influenced my romantic sensibility. You have to be able to wear a piece of jewelry and have it work with your moves as well as your style.

Since I was 5 years old I loved the costumes, jewelry and sets for the ballet. I knew when I had my first piece of jewelry that I wanted to create my own pieces. I had a dream of finding a treasure chest in a castle, and I took it home and placed it by my bedside and when I woke in the morning it was gone. So I feel as if I am spending my life filling my treasure chest with the perfect jewels.

You've worked with such prominent designers as Karl Lagerfeld and Christian Lacroix. What kind of an impact do you think that had on you?

Just seeing the creative process get rolled out; I think the biggest part for me is not being afraid to take something apart that is basically complete and rebuild it. I always remember Karl, when I thought something was perfect, would just cut it apart and give it a new





COLOR, AFRICA, PUNK, ROYALTY, GENDER, MIXING
ETHNICITY, **SEXUALITY**, POTENT, CON-
DUCTION, THAT POSES THE QUESTION: WHAT IS
MASCULINE? WHAT IS **BEAUTIFUL**? THESE THINGS
WERE ALL RAY PETRI AND CORNER STONES OF
HIS WORK AT **ARENA**. HE WAS THE MASTER OF
CHALLENGING ROLES, STATUS, AND STATUS QUO,
NOT ONLY IN HIS STYLING BUT IN HIS CHOICE
OF MODELS. LIKE **PETRI** I WANTED YOUNG MEN
AND WOMEN WHO DON'T NECESSARILY FIT INTO
SOCIETIES DYE THROUGH THE STYLING I WANTED
TO PORTRAY THE MODELS **ROYALTY**, ELEVATING
THEM AND GIVING THEM A SENSE OF AUTHORITY.
MY CHOICE OF MODELS PLAYED TO THIS THEME



VIBRATIONS

HANGING ON



- 1 FUR JACKET BY DOLCE & GABBANA
- 2 HORNY DEMON WRIST BAND BY AND_1
- 3 BLACK SAPPHIRE AND SILVER BRACELET AND RING BY SCOTT KAY
- 4 BLACK SHEER HOSEIERY BY WOLFORD
- 5 BODYSUIT BY WOLFORD

REFLECTIONS

"CIRCUS" PATENT LEATHER BOOTIES
WITH MESH CUT OUT DETAIL BY CHRISTIAN LOUBOUTIN
BLACK LEGGINGS BY OMO NORMA KAMALI





B
150 ANS

BOUCHERON
PARIS

